

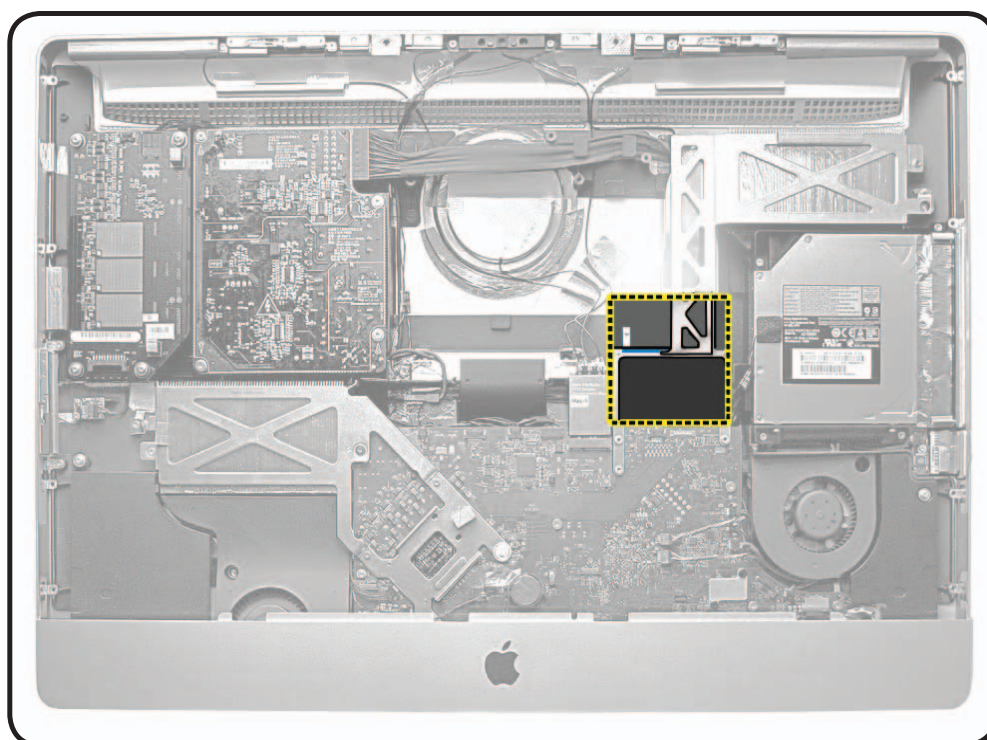


Video Card

First Steps

Remove

- Glass panel
- LCD panel
- Power supply
- Backlight pressure wall
- Optical drive
- Optical fan
- IR board
- Memory
- Logic board



Tools

- Torx T8 screwdriver
- Torx T10 screwdriver
- ESD-wrist strap and mat





Removal

- 1 Remove 3 screws attaching video card to bracket.

- (1) 922-7971, T10



- (2) 922-4723, T8



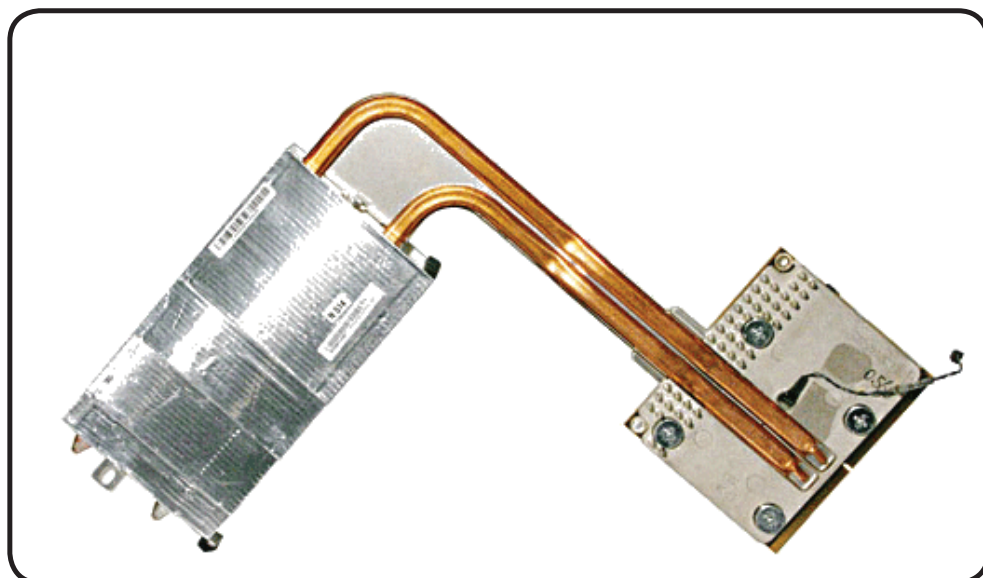
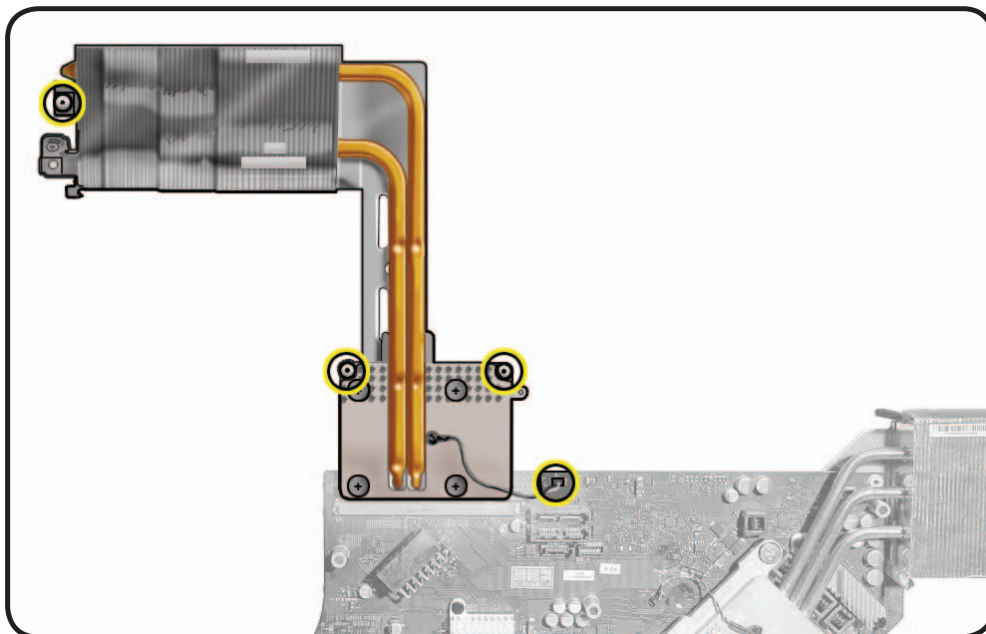
- 2 Disconnect video card temp sensor from logic board.

- 3 Support video card as you slide card and heatsink out of slot on logic board.

Replacement Note:

If you replace the logic board, transfer video card and video card bracket to replacement logic board.

Refer to the next page if removing video card bracket from logic board.

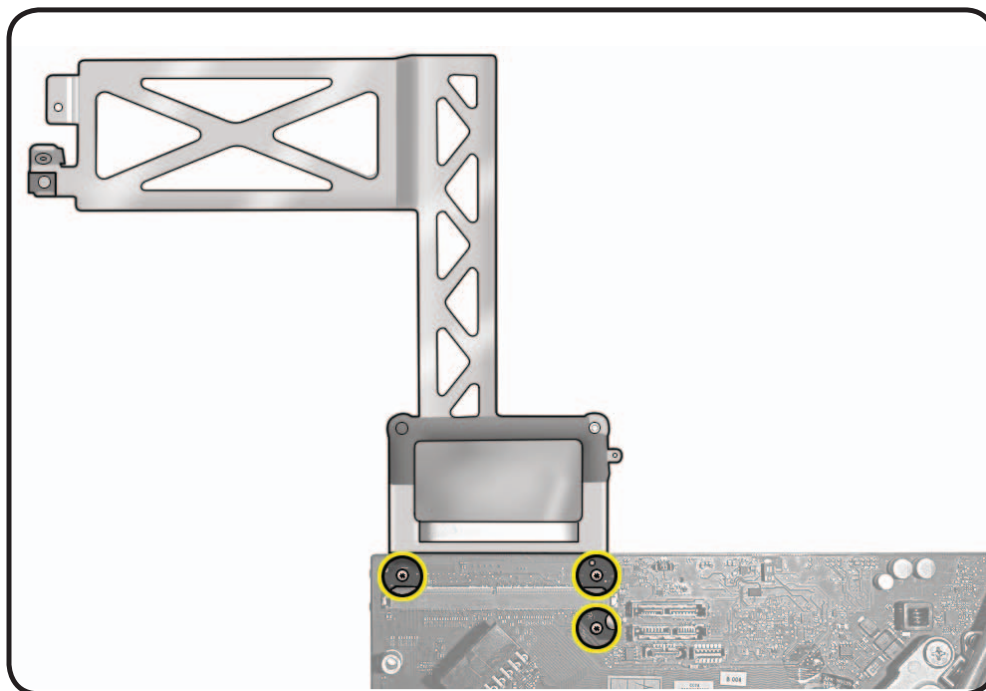




- 1 To remove the bracket, remove 3 T8 screws on back side of logic board.
 - 922-4723



- 2 Carefully slide video bracket off logic board.



Reassembly

- 1 Replace EMI tape on panel before replacing glass panel.

Note: Replacement EMI tape is included with all service parts that involve panel removal and is available separately, 922-9908, Pkg. of 10.

