

# Installation Guide

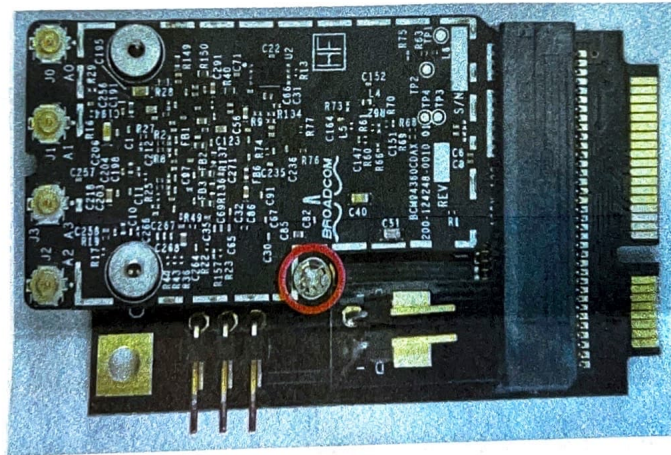
## Apple Broadcom BCM94360CD for iMac 2009, 2010 & 2011

iFixit provides one of the most detailed tutorials on how to disassemble Apple products. Please follow iFixit replacement guides, specific to your iMac model, to replace AirPort Extreme card and disconnect original Bluetooth module. Here is the link for your convenience:

[https://www.ifixit.com/Device/iMac\\_Intel](https://www.ifixit.com/Device/iMac_Intel)

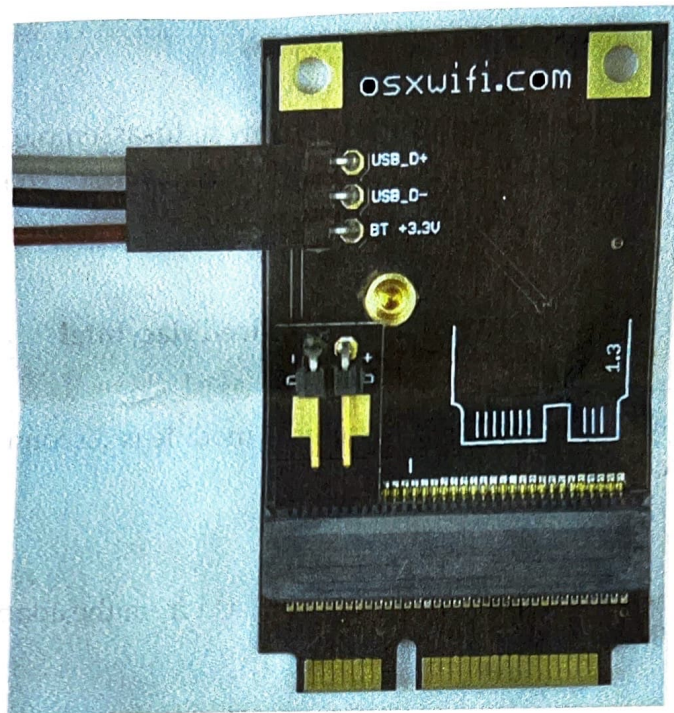
Once Airport Extreme card is removed and Bluetooth module is disconnected, proceed as follows to install our product:

**Step 1:** Remove the Apple Broadcom BCM94360CD card from the adapter by removing the screw.

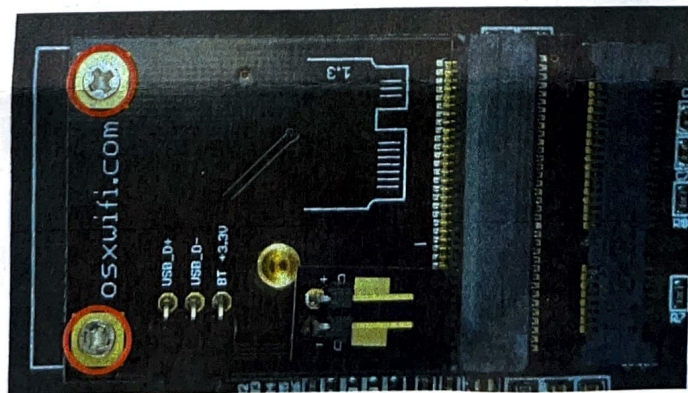


BCM 943602CDA

**Step 2:** Connect custom USB cable to the adapter with the wires aligned in the following order: the grey wire aligned with USB\_D+, black wire aligned with USB\_D-, and brown wire aligned with BT+3.3V.

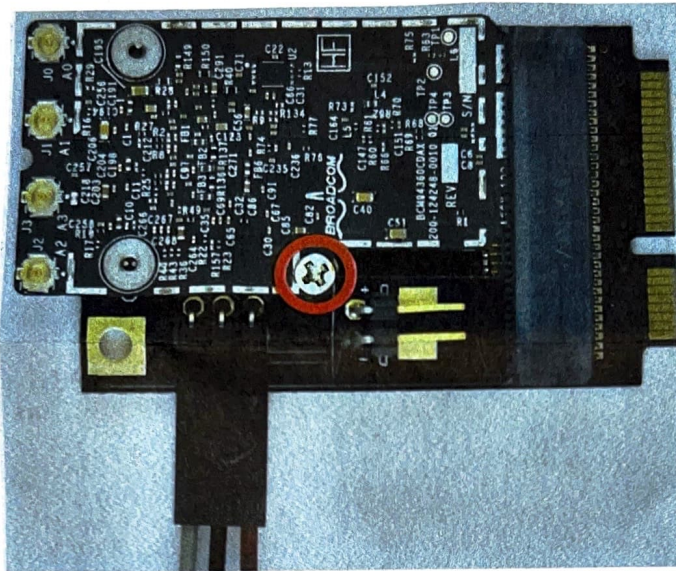


**Step 3:** Position the adapter inside the iMac's mini-PCIe slot, where the original Airport Extreme card used to be, and secure with screws.

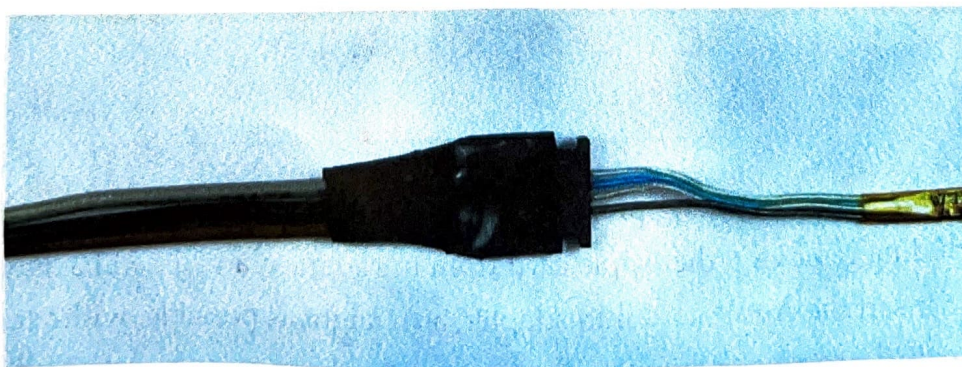
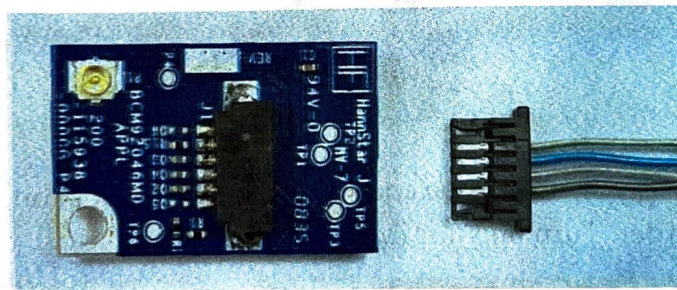




**Step 4:** Insert the Apple Broadcom BCM94360CD card back into the adapter and secure it with the screw.



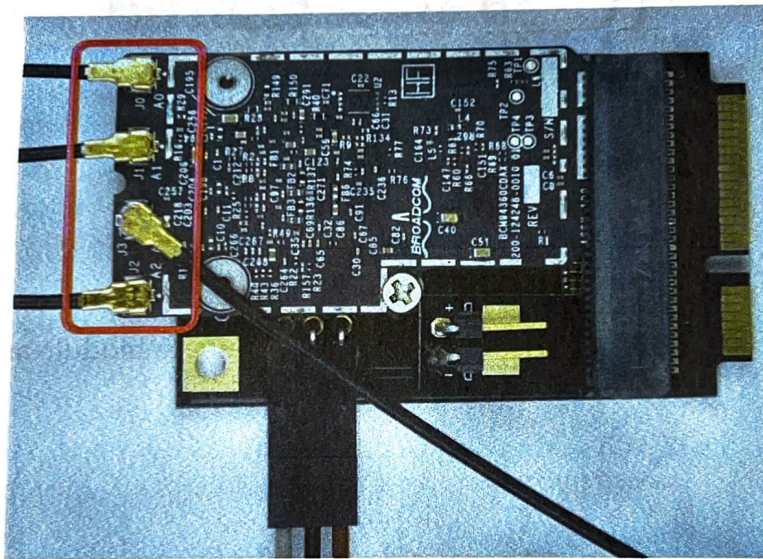
**Step 5:** Disconnect USB Data cable from the original Bluetooth module and connect to our custom USB cable.





**Step 6:** Depending on the model of your iMac, you may have two or three original Wi-Fi antennas. If you have three Wi-Fi antennas, connect them to ports J0, J1, and J2. If you have two Wi-Fi antennas, connect them to ports J0 and J1, and the extra Wi-Fi antenna (included in the kit) to J2. The extra antenna is recommended to be located where the Apple Logo on the front-cover will be, in order to ensure better reception.

**Step 7:** Please note, due to small size and delicate nature of the parts, this step should be done very carefully. Connect the original Bluetooth antenna to the extension cable. The other end of the extension cable connect to J3 port on Apple Broadcom BCM94360CD card.



**Step 8:** Check everything you have done and get your iMac back in one piece following the iFixit guide in reverse order. Turn on your iMac.

## TROUBLESHOOTING TIPS

### TIP # 1

If WiFi or Bluetooth are not working properly upon installation, try to completely disassemble the full kit, including removing the Apple card from the adapter, and assemble it back. As you assemble, try to insert the Apple card into adapter, as straight as possible, without extending too much force.