

June, 2013

Installing Apple Service Diagnostic on a USB hard drive

Requirements

-A Macintosh running OS X Mt Lion version 10.8 or later.

Warning: Older OS versions may cause corruption after performing a Disk Utility Restore.

-An external USB 2.0 hard drive with at least 40GB or larger capacity

-Disk Utility (located in /Applications/Utilities)

Note: This document will use an image for ASD 3S132 for the example. Yours could be different.

Installation Instructions

Partition the drive.

Connect the external USB hard drive to your Macintosh.

Open Disk Utility (located in /Applications/Utilities).

Select the external USB hard drive.

Click the Partition tab to partition the drive into two volumes as follows:

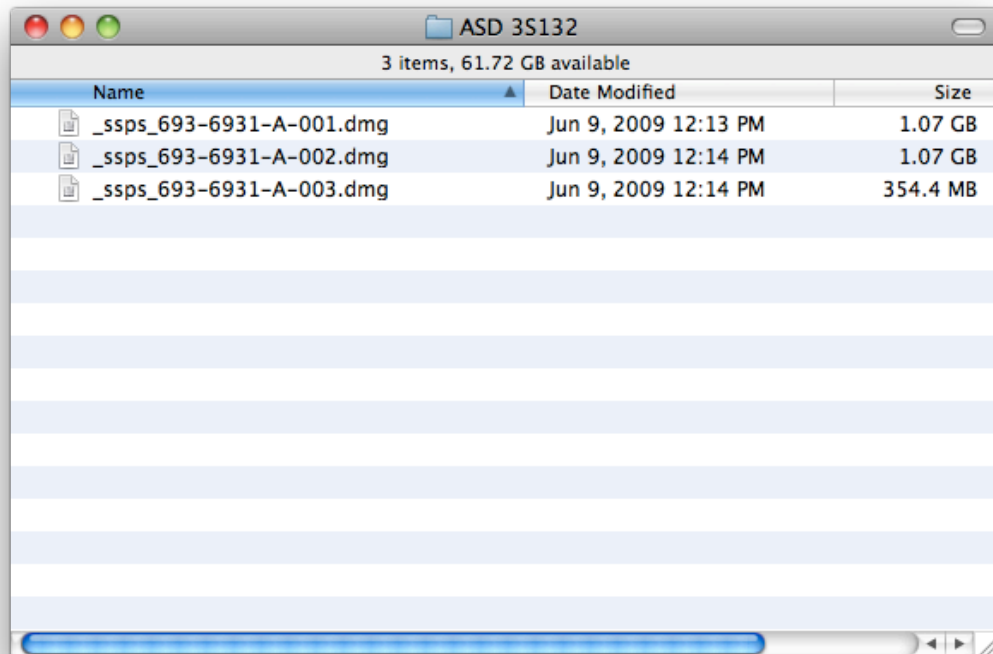
For ASD (OS), the partition size must be 20GB or larger. Name this volume with the version number, ASD OS 3S132 for example.

For ASD (EFI), the partition size must be 30MB or larger. Name this volume with the version number, ASD EFI 3S132 for example.

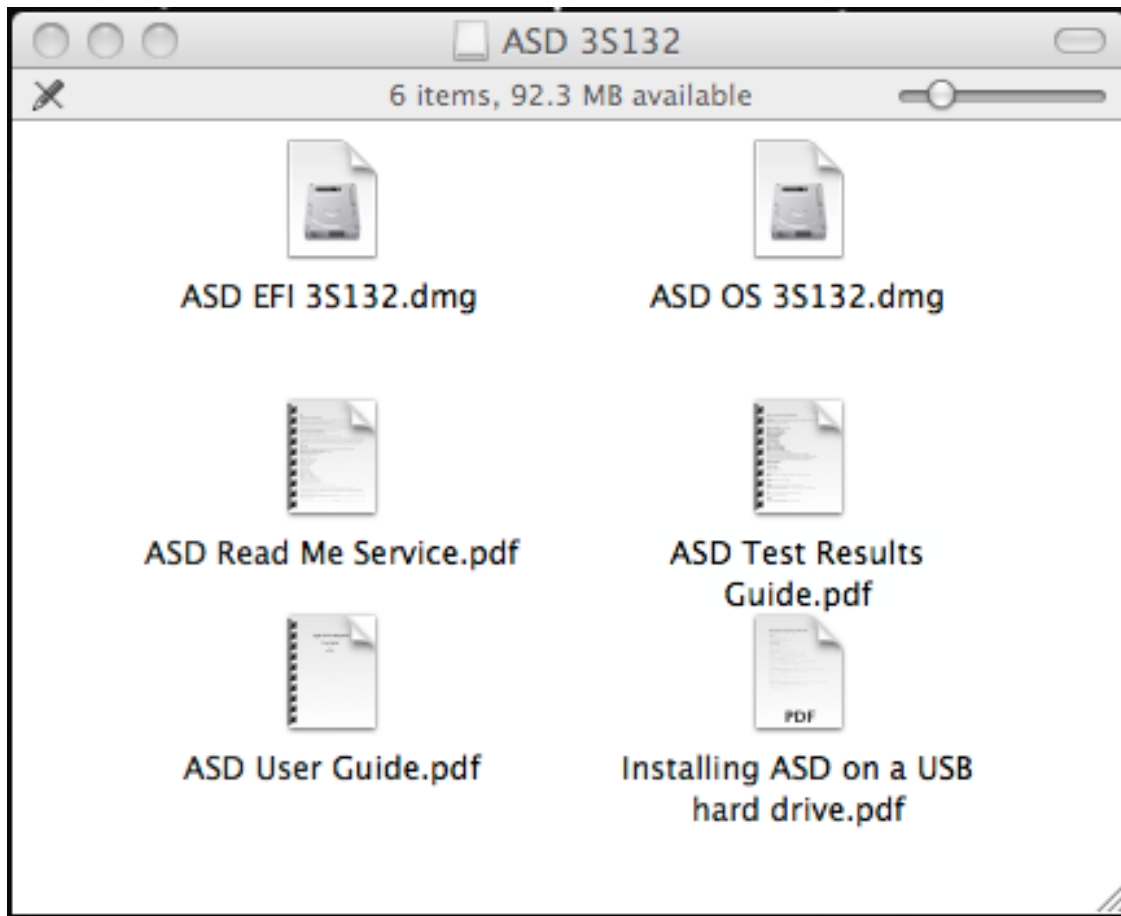
Click on Options and select GUID Partition Table as the partition scheme.

Click Partition to partition the hard drive.

Downloaded Images. Since these disk images are distributed as multiple part disk images, make sure all completed downloaded parts are located in the same directory.



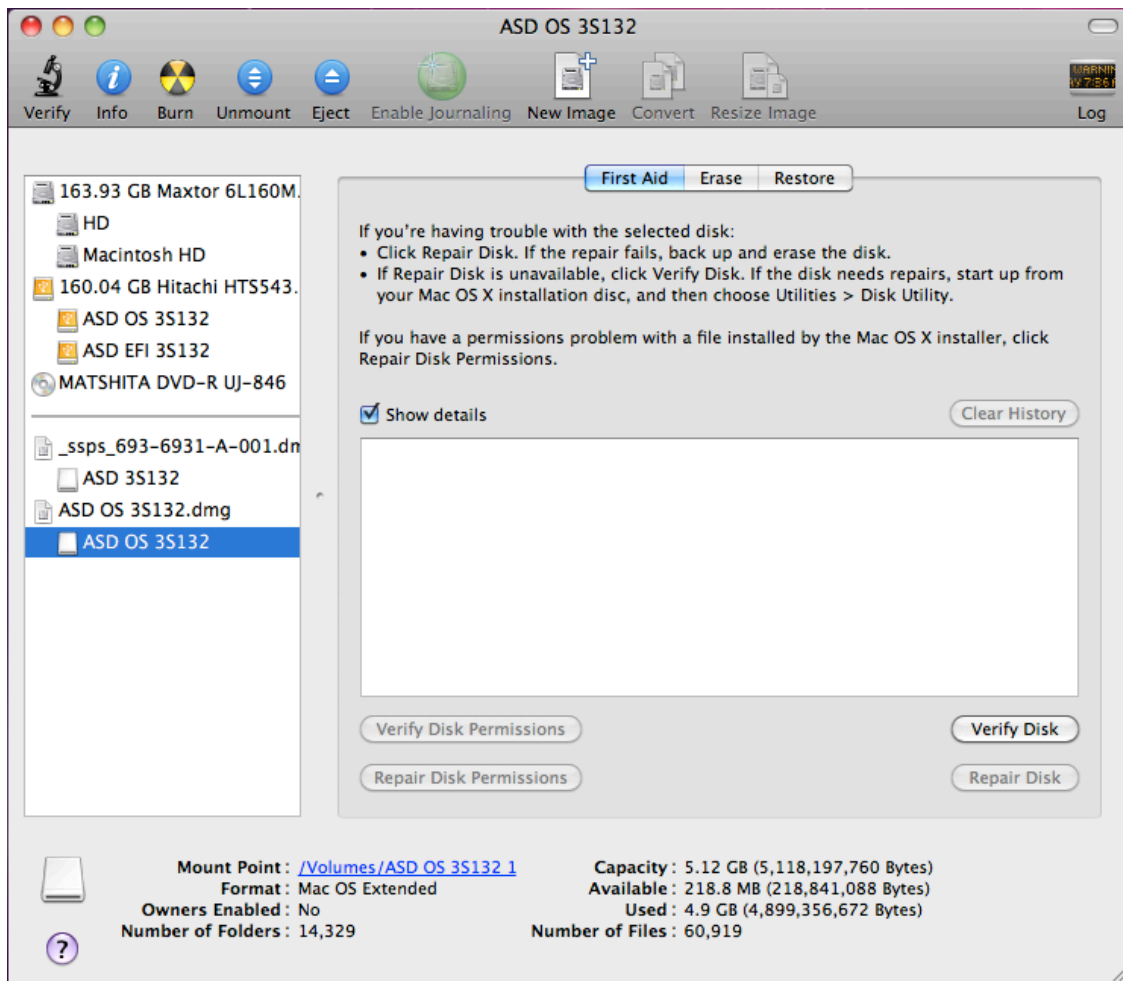
In the Finder, double-click on the _ssps_693-6931-A-001.dmg file to mount it. This is the image name for ASD 3S132, for example. Within it are two disk images, one for OS, and one for EFI.



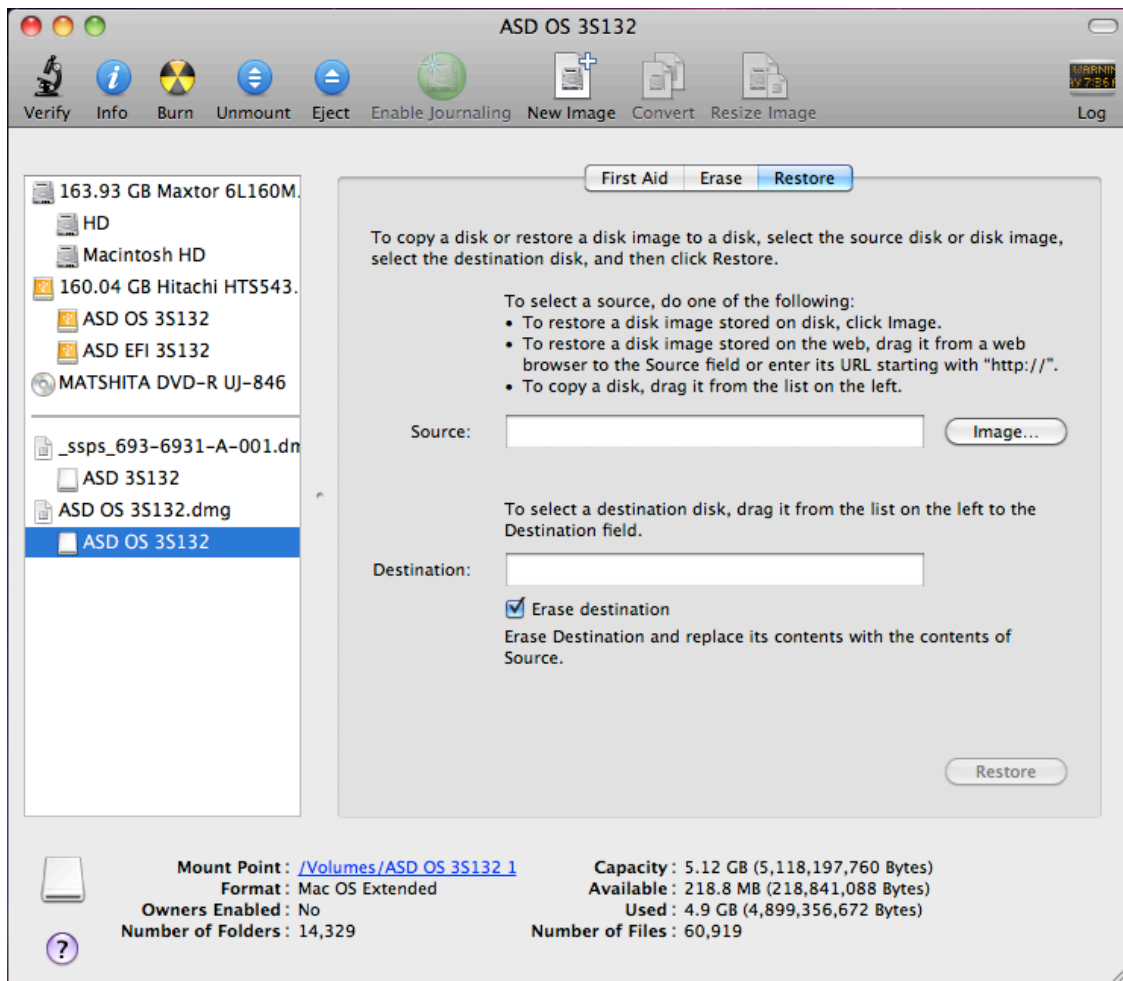
Restore the OS diagnostic.

In Finder, locate the mounted disk volume. double-click the volume that begins with "ASD OS 3S132" to mount the image.

Note: ASD OS 3S132.dmg should be mounted before Restoring the image to the hard drive. The images are NOT compressed and therefore "Scan Image For Restore" will not work.



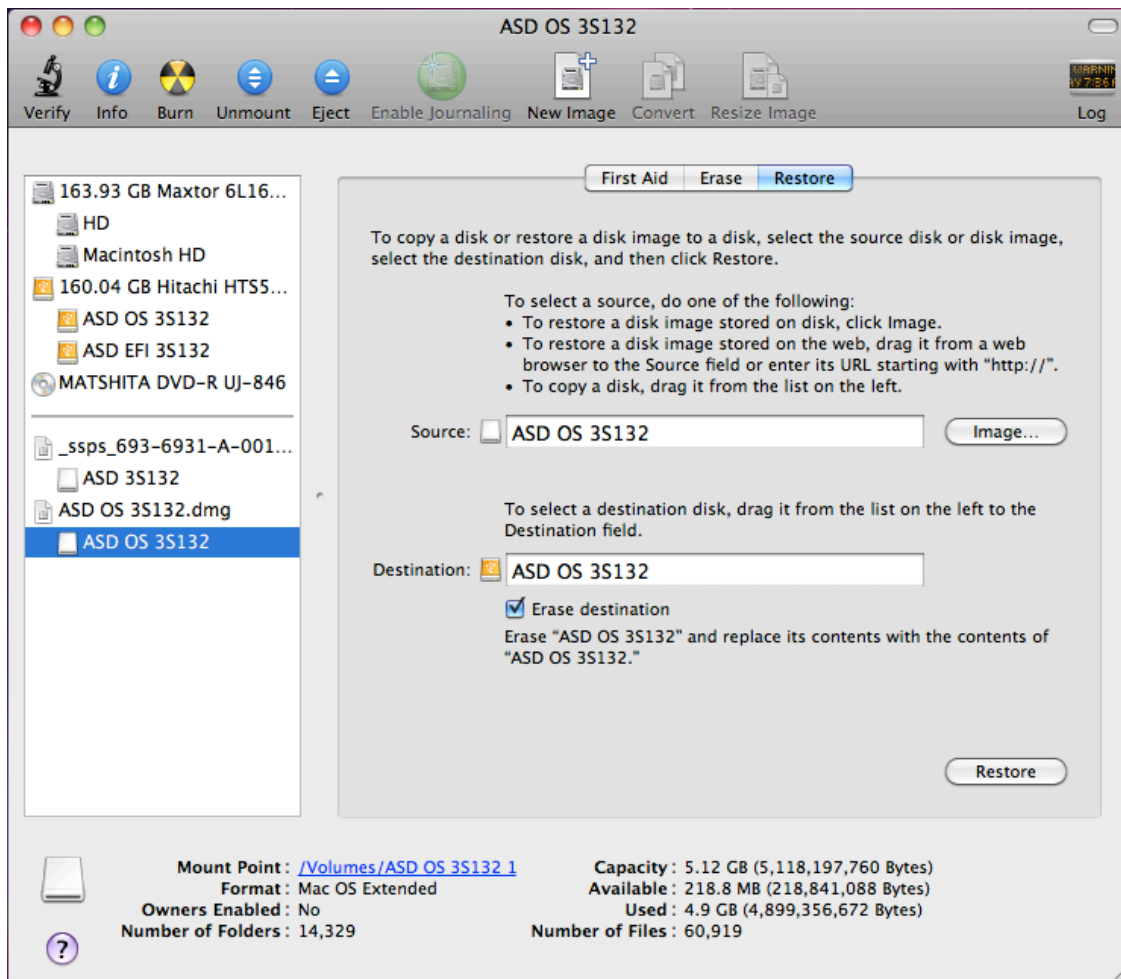
Select the ASD OS 3S132 mounted image and press the Restore button at the top of the Disk Utility window.



In Disk Utility, drag the icon for ASD OS 3S132 mounted disk image to the Source window.

In Disk Utility, drag the icon for ASD OS 3S132 USB drive to the Destination window.

Important: Be sure to select Erase Destination checkbox even if the drive has already been erased.

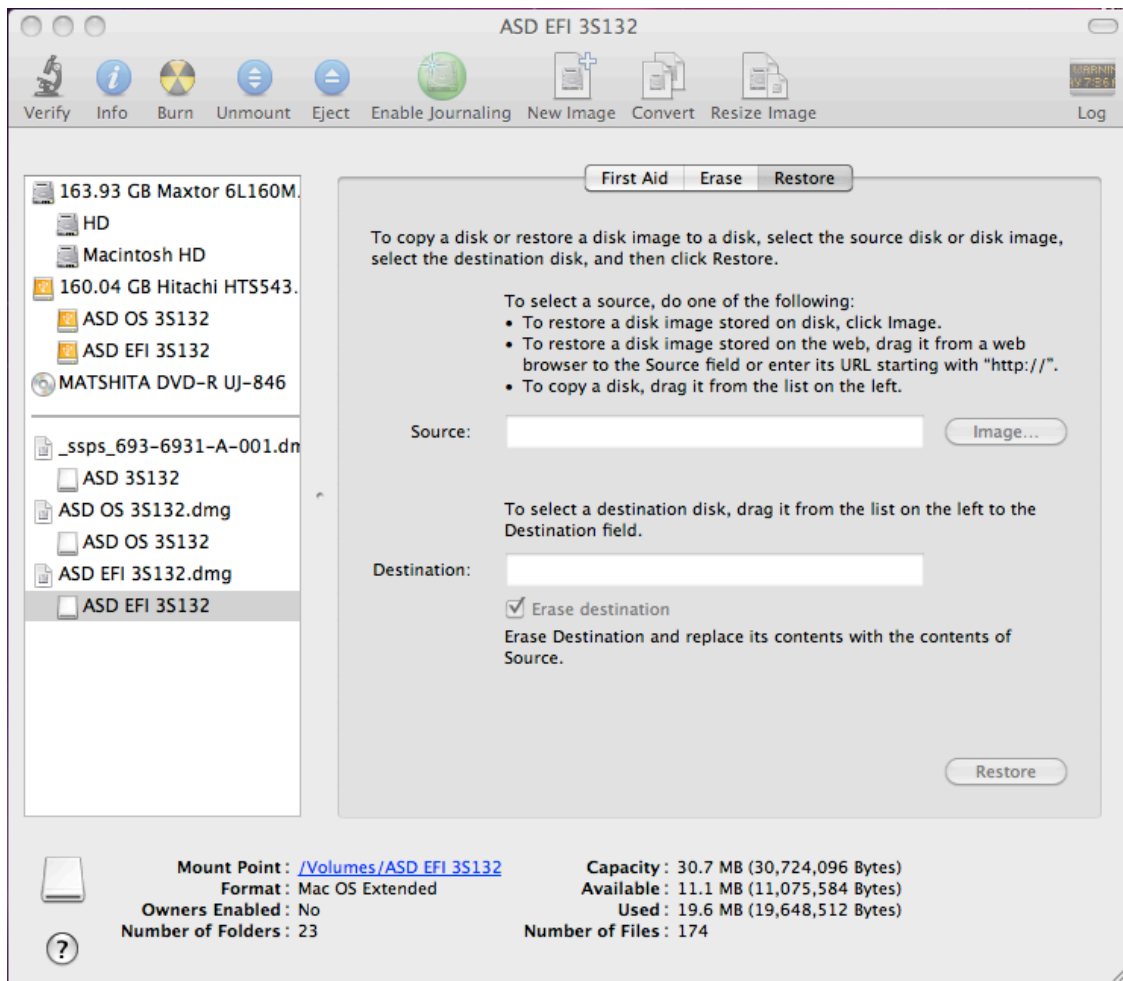


Click the Restore button to start the installation.

Restore the EFI diagnostic.

In Finder, double-click the volume on the USB hard drive that begins with "ASD EFI 3S132" to mount the image.

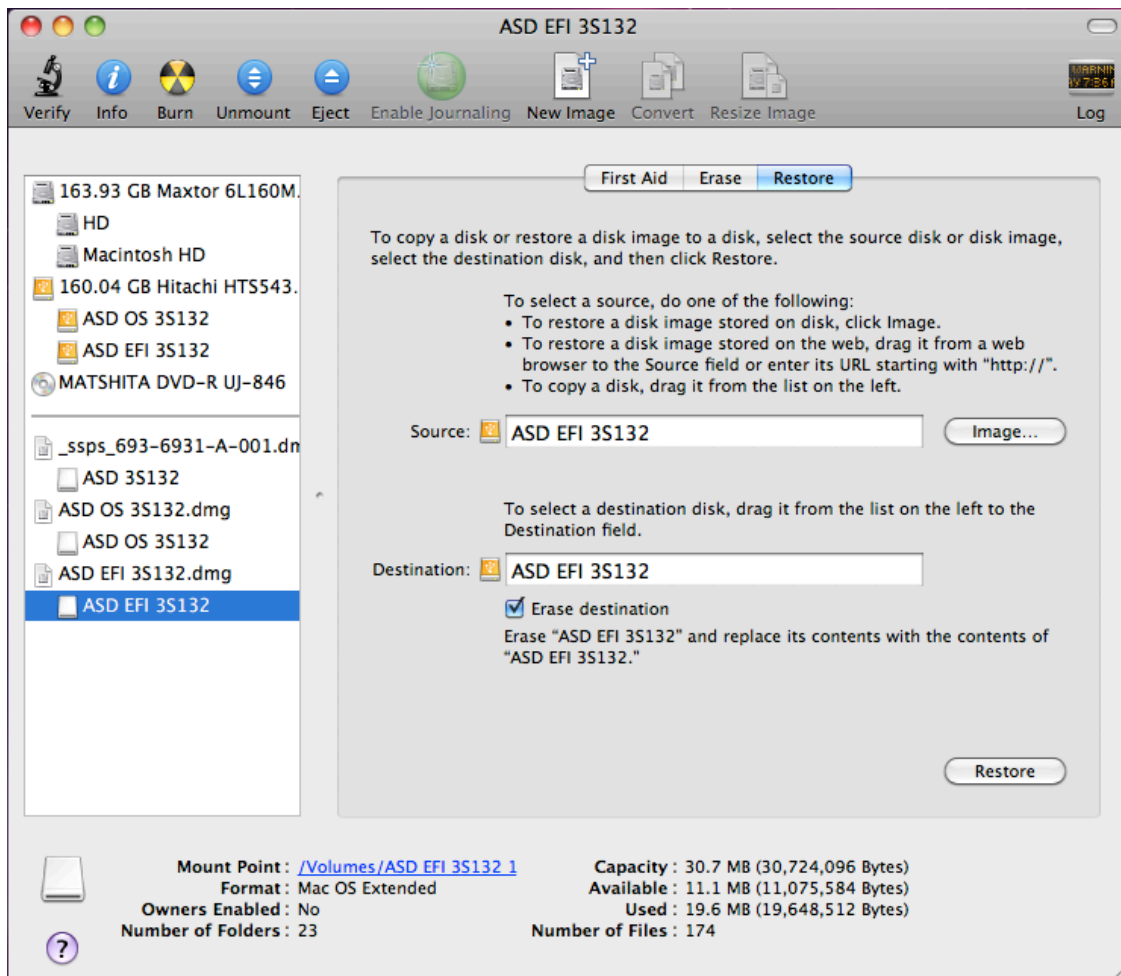
Note: ASD EFI 3S132.dmg should be mounted before Restoring the image to the hard drive. The images are NOT compressed and therefore "Scan Image For Restore" will not work.



In Disk Utility, drag the icon for ASD EFI 3S132 mounted disk image to the Source window.

In Disk Utility, drag the icon for ASD EFI 3S132 USB drive to the Destination window.

Important: Be sure to select Erase Destination checkbox even if the drive has already been erased.



Click the Restore button to start the installation.

Copyright © 2001-2013 Apple Inc. All rights reserved.

Apple, the Apple logo, FireWire, Mac, Macintosh, MacBook, and MacBook Pro are trademarks of Apple Inc., registered in the U.S. and other countries.

AirPort is a trademark of Apple Inc.