

# **MaxConnect for Mac Pro Optical Bay Installation Guide**

---

**MaxUpgrades**

---

### Opening the Computer

1. Shut down the computer.

**Warning: Always shut down the computer before opening it to avoid damaging its internal components or the components you are installing.** Do not open the computer or attempt to install items inside it while it is on.

2. Wait 5 to 10 minutes to allow the computer's internal components to cool.

Warning: After you shut down the system, the internal components can be very hot. You must let the computer cool down before continuing.

3. Unplug all external cables from the computer except the power cord.

Touch the metal PCI access covers on the back of the computer to discharge any static electricity from your body.

4. Important: Always discharge static before you touch any parts or install any components inside the computer. To avoid generating static electricity, do not walk around the room until you have finished working and closed the computer.

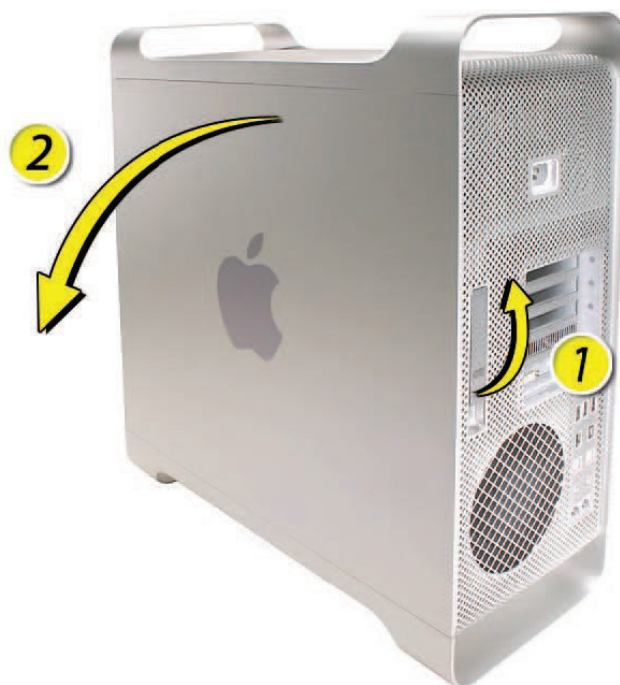


Unplug the power cord.

Hold the side access panel and lift the latch on the back of the computer.

Warning: The edges of the access panel and the enclosure can be sharp.  
Be very careful  
when handling them.

Remove the access panel and place it on a flat surface covered by a soft, clean cloth.



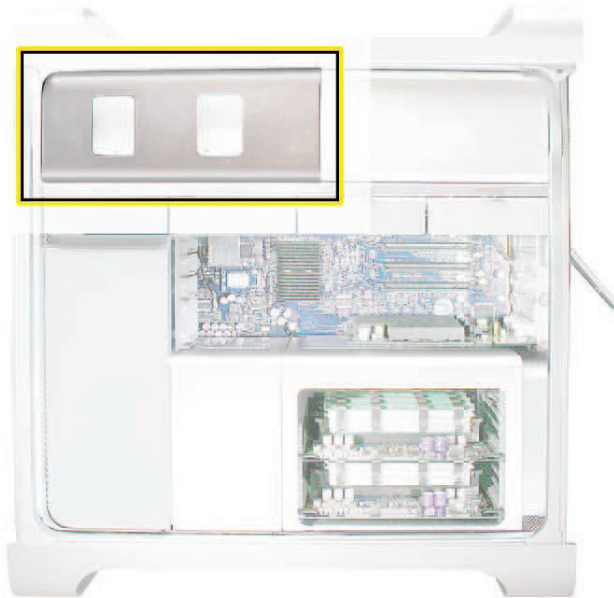
*MaxConnect for Mac Pro Systems*

---

Carefully lay the computer on its side so that the open side faces up.

**Important: Make sure the latch on the back panel is in the up position. When the latch is down, the optical drives and carrier are locked in place and you will not be able to remove them.**

Locate the optical drive.

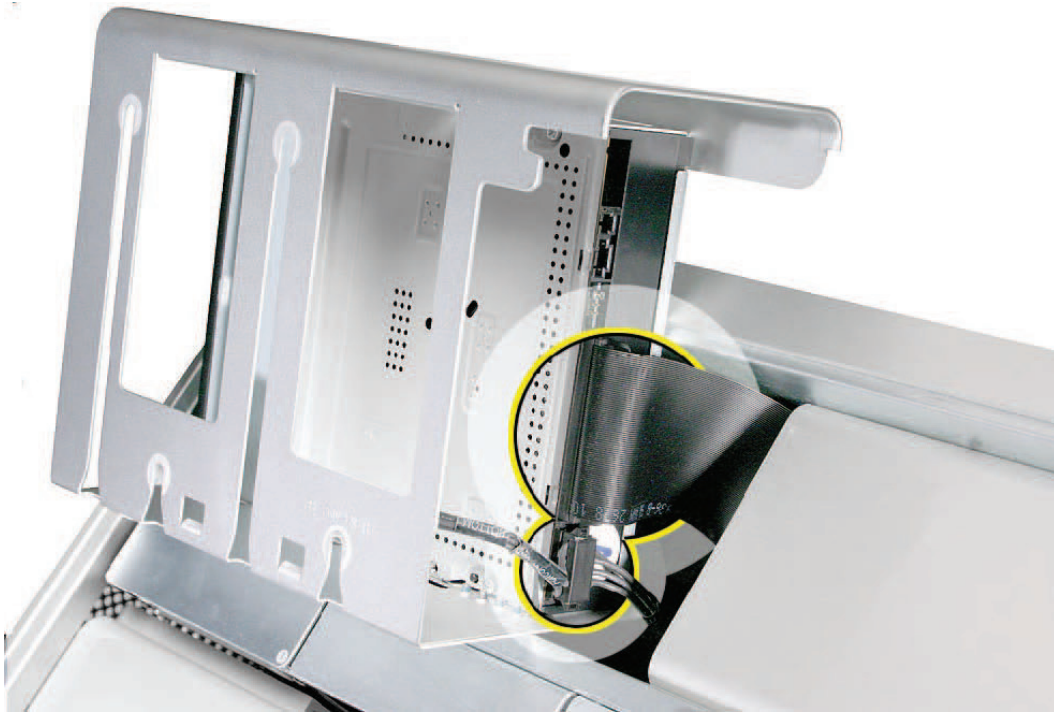


Pull the optical drive carrier part way out of the computer.

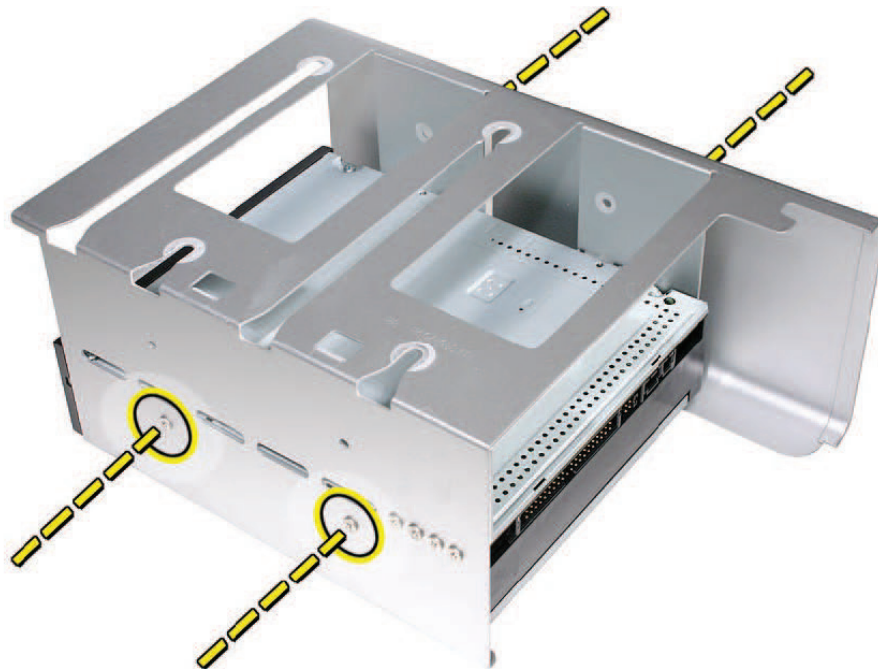


---

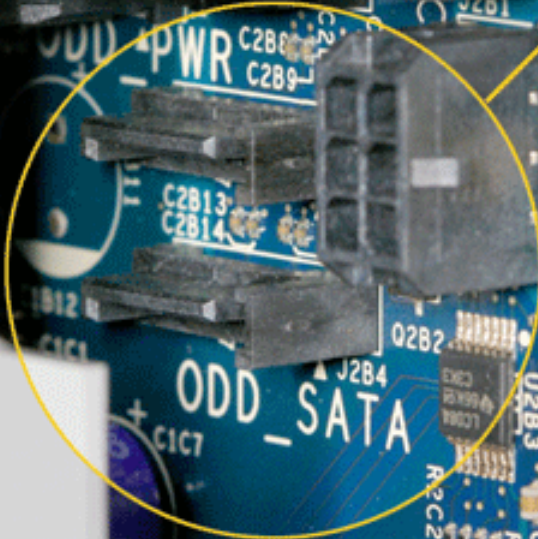
Disconnect the power and ribbon cables from the optical drive(s) and remove the carrier.



Remove the four mounting screws and remove the optical drive from the carrier.



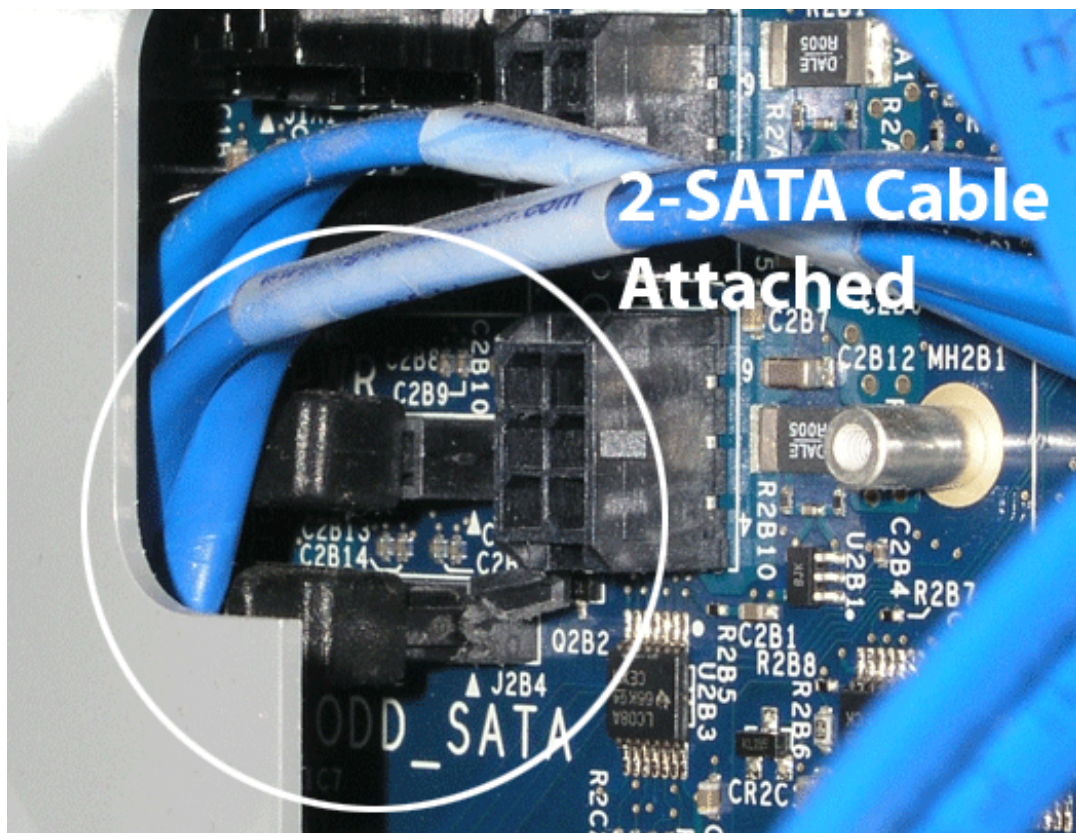




A close-up photograph of a network switch or patch panel. Several blue Ethernet cables are plugged into the ports, bundled together. A black cable, possibly a power or data cable, is also visible, partially covered by a black fabric sleeve. The device is light-colored with visible port covers and mounting holes.

## MaxConnect for Mac Pro Systems





## MaxConnect for Mac Pro Systems

---

Check the tension by inserting the base mount in the Optical Bay, if too tight, adjust the screws by half or quarter turn with hex key.





---

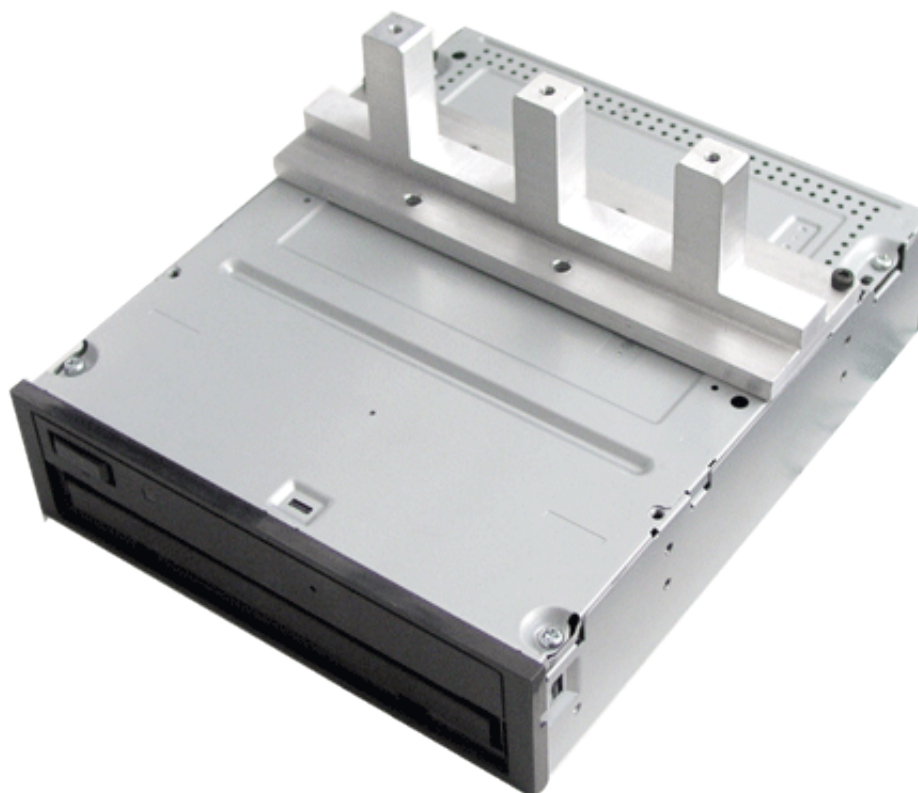
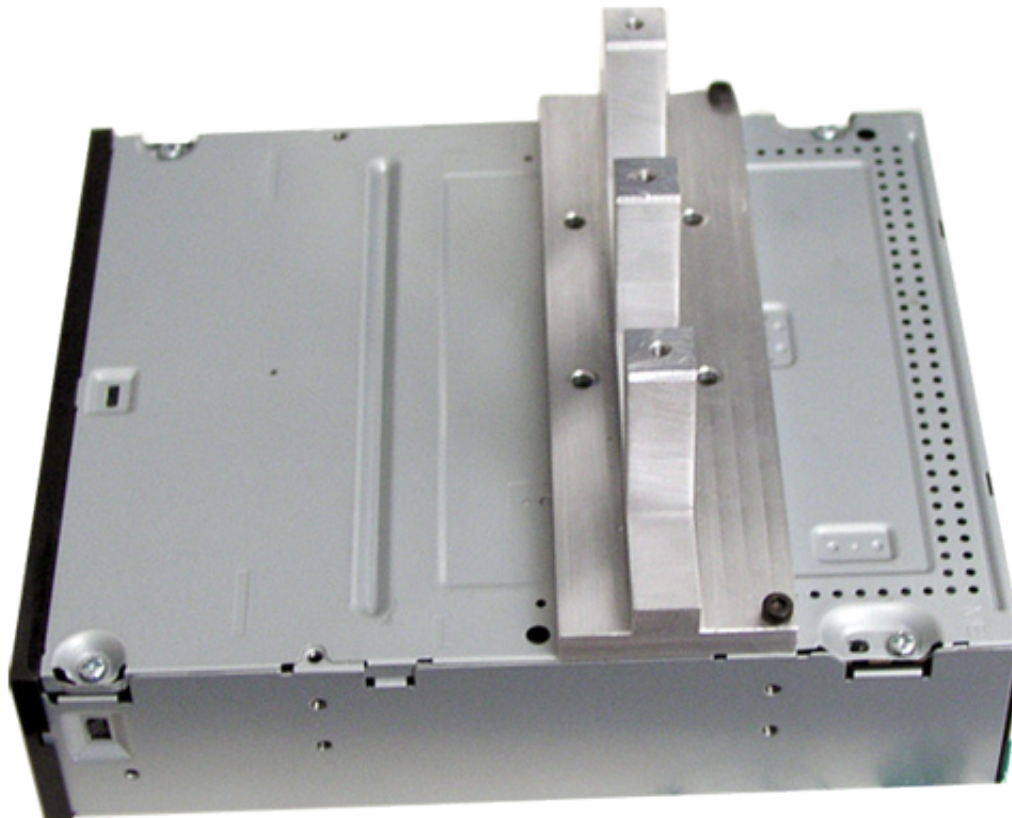
Bolt the disk drives to the base mount.



*MaxConnect for Mac Pro Systems*

---

Bolt the Optical disk drive to the Optical Drive mount.



*MaxConnect for Mac Pro Systems*

---

Install the Optical Drive to the base mount carrying Hard Disk Drives.

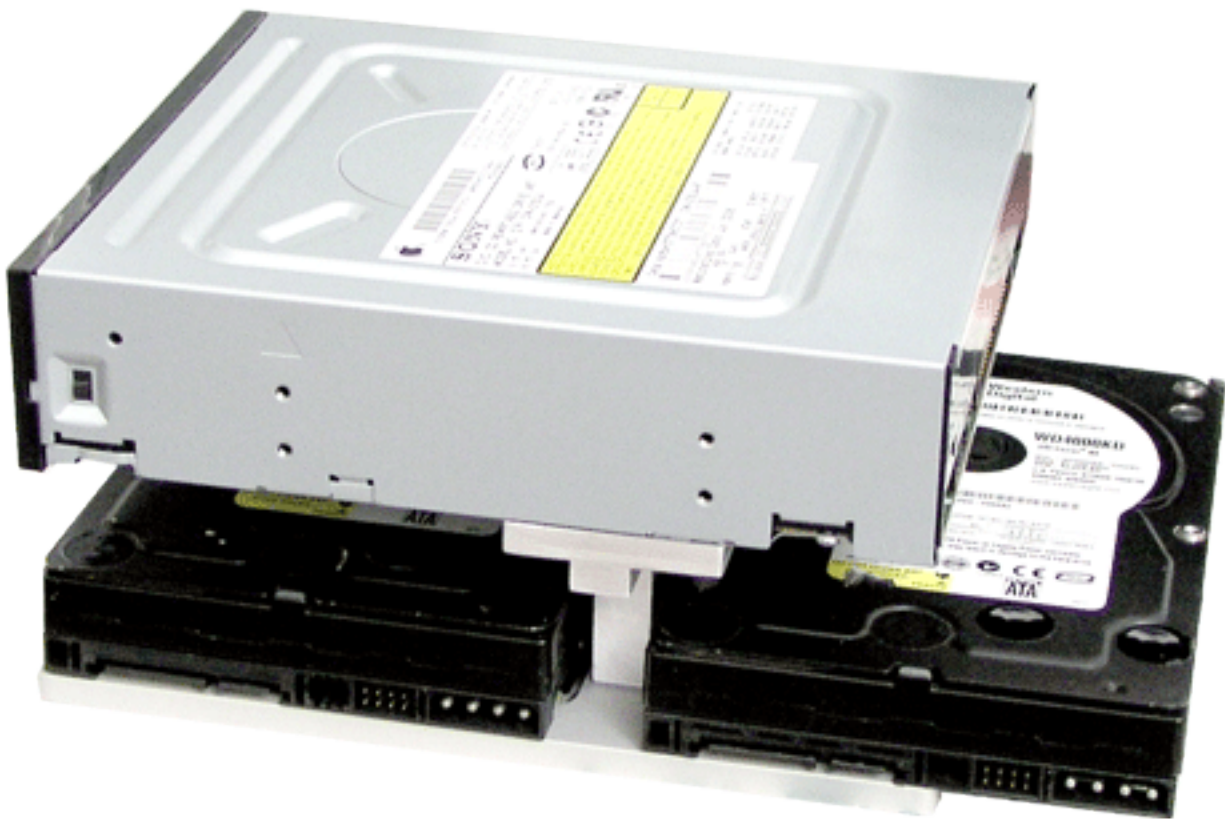


*MaxConnect for Mac Pro Systems*



---

Assembly is ready to be installed in the Optical Bay of the Mac Pro



*MaxConnect for Mac Pro Systems*

---

Installation of the Assembly in the Optical Drive Bay, IDE or ATA Connector and Power Cable Shown.



---

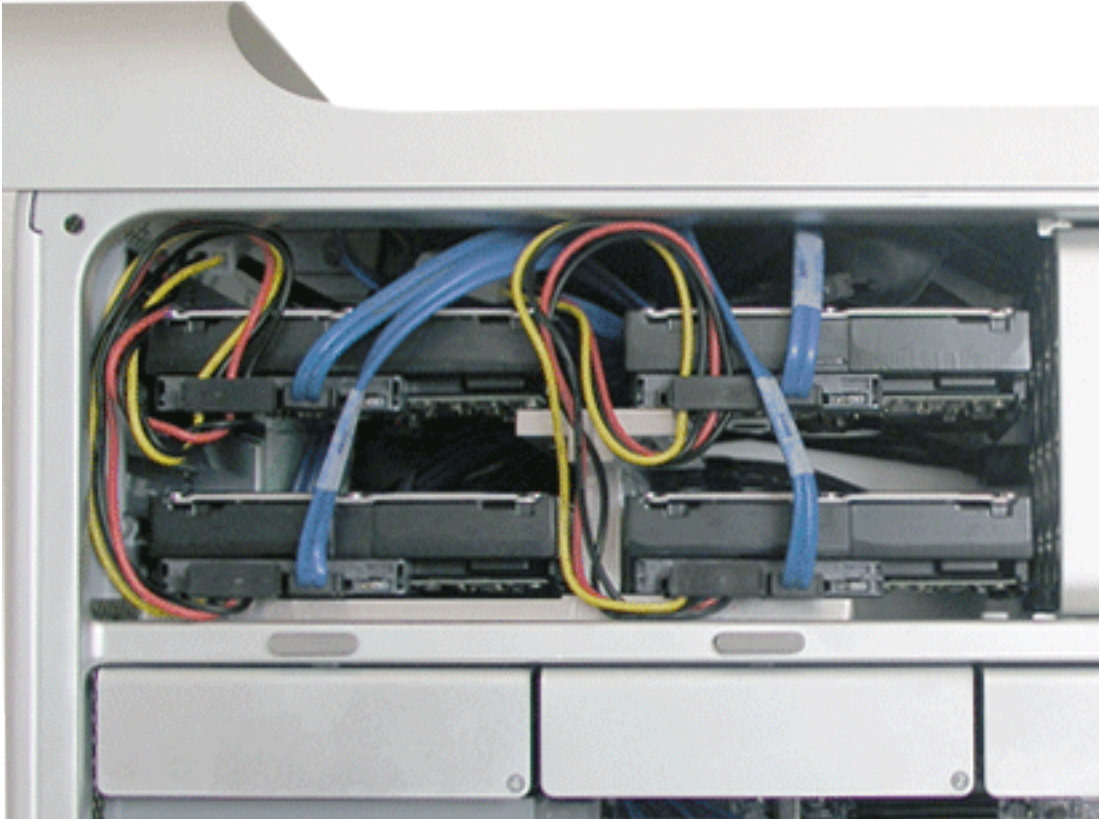
Optical Drive with two SATA Drive shown, with Power and SATA Cables Connected

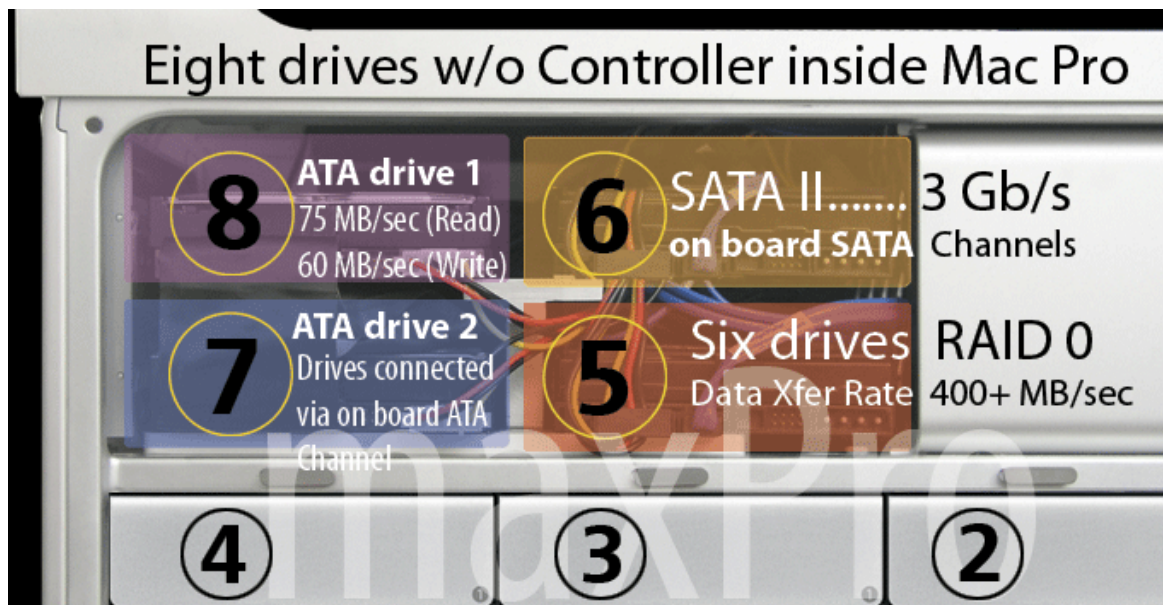




---

Assembly shown below, four SATA Drives installed in the Optical Drive Bay of the Mac Pro System, two additional SATA drives connected via 2 Port PCI Express Controller.





Assembly shown below, two ATA and two SATA Drives installed in the Optical Drive Bay of the Mac Pro System, no Controller needed

