




Migrating to Mountain Lion

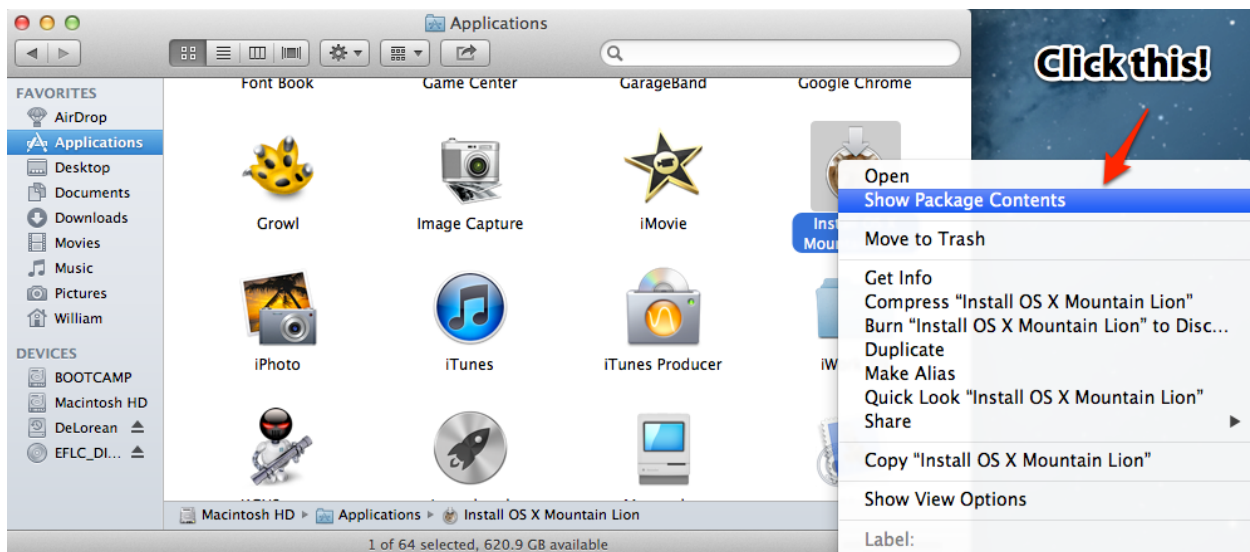
Preparing OS X Lion, or Mac OS X Snow Leopard for OS X Mountain Lion

1. Free up disk space, and make sure you have at least 16GB of free disk space.
2. Make sure your disk is in good health. Verify the disk, and the disk permissions in Disk Utility. If necessary, repair the disk, and its permissions.
3. Use Time Machine to backup your Mac. Make sure no items are in the "Excluded" list. To do so, open System Preferences, then click Time Machine. Click "Options", and verify nothing is in the "Excluded" menu. Your Time Machine backup drive will be in the list by default. This is normal. Make sure you have multiple backups of your Mac before continuing.
4. Make sure you've installed the latest updates available. To do so, click the  menu bar icon, then click on Software Update. OS X Lion users should be running OS X Lion 10.7.4, and Mac OS X Snow Leopard users should be running Mac OS X Snow Leopard 10.6.8.
5. If you have third-party software, contact the vendor of the software, or visit <http://roaringapps.com> for information regarding Mountain Lion compatibility.
6. If you use iCloud, check your account settings in System Preferences under the "iCloud" tab to verify they are correct, and check your device backups.



Migrating to Mountain Lion

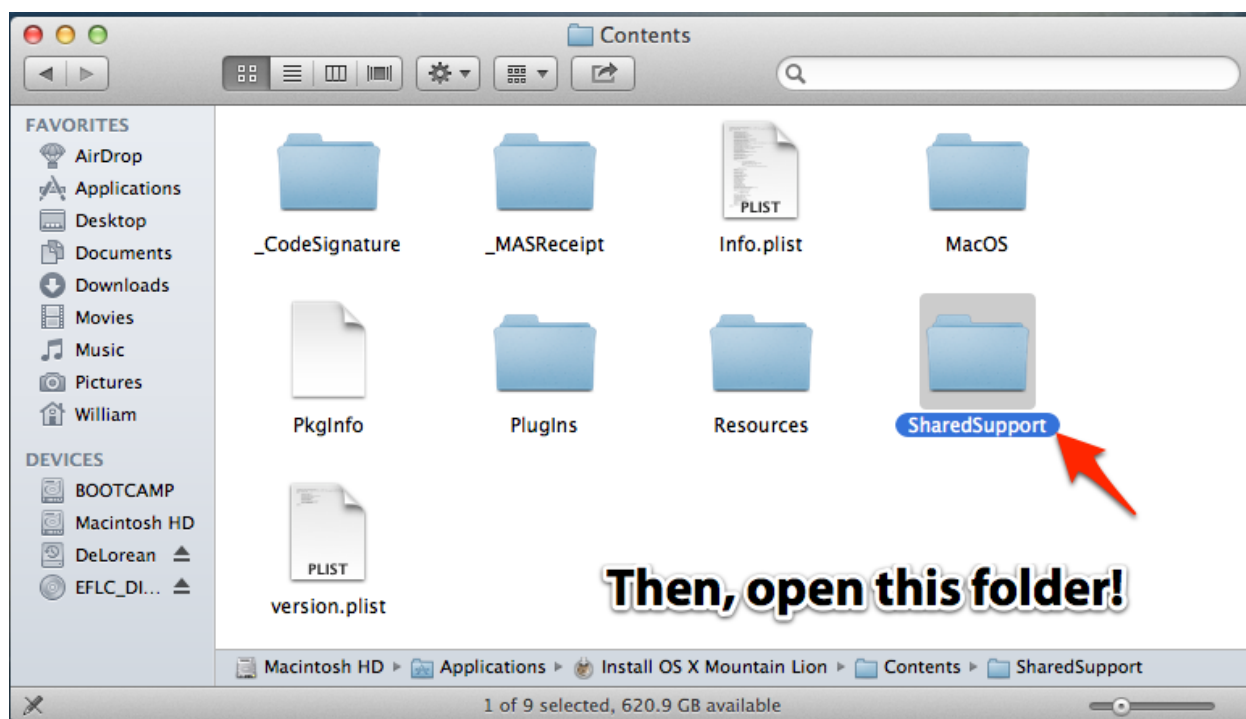
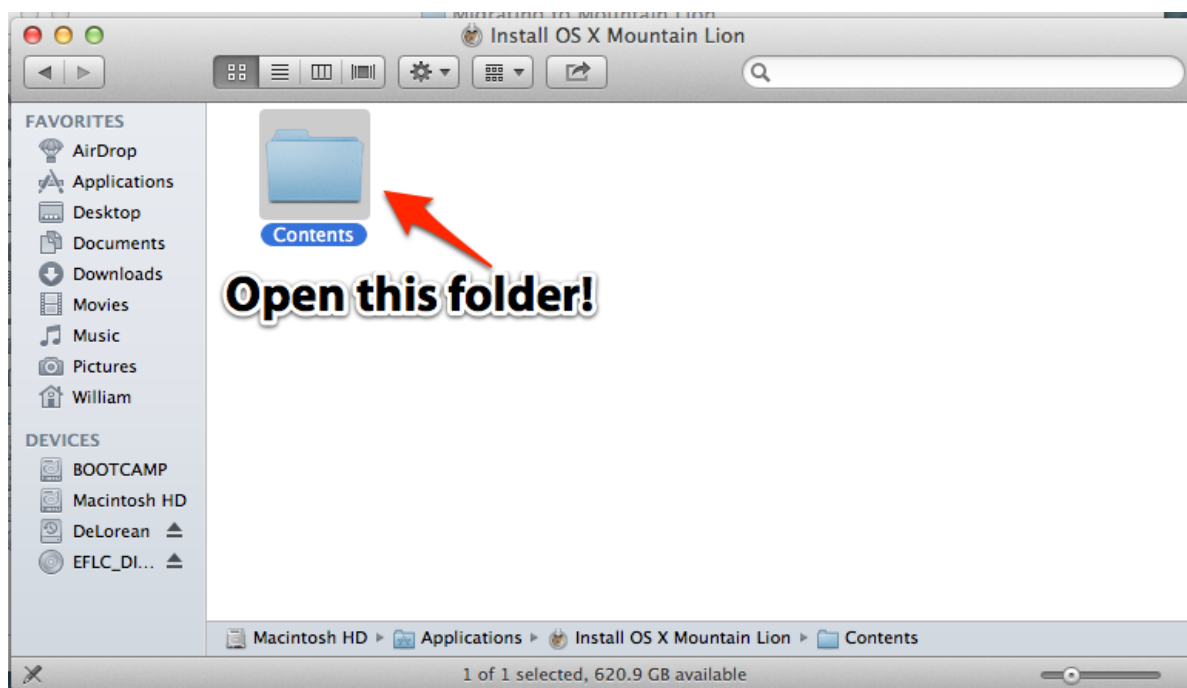
1. Download OS X Mountain Lion from the Mac App Store. By default, the "Install OS X Mountain Lion" application will download to your Applications folder.
2. Browse to your Applications folder, and two-finger click "Install OS X Mountain Lion" (if using a trackpad), or Click "Install OS X Mountain Lion" while holding the Control key on your keyboard (if using another pointing device). Select "Show Package Contents."





OS X Mountain Lion

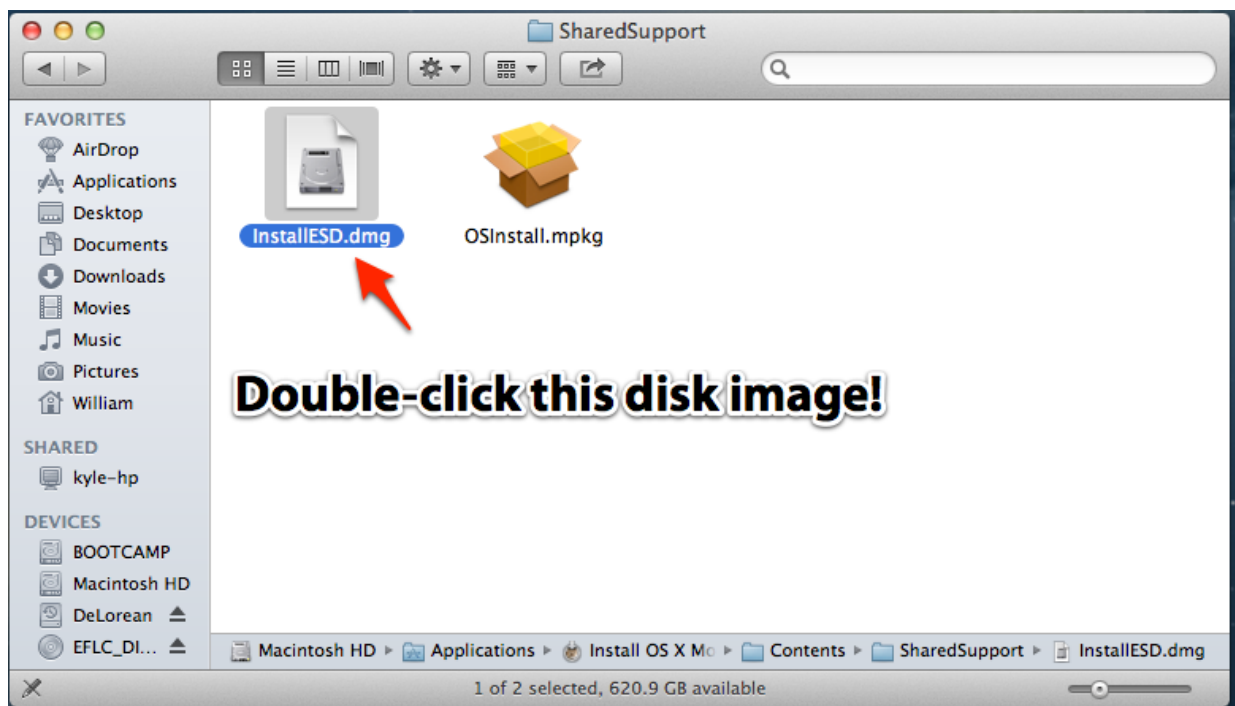
3. Open the "Contents" folder, and then open the "SharedSupport" folder.





Migrating to Mountain Lion

4. Double-click on "InstallESD.dmg" to mount it in the Finder.



5. Open the Applications folder, then open the "Utilities" folder. Double-click on Disk Utility to open it.
6. Connect a USB flash drive with at least 4GB of free space.
7. Select the USB flash drive in the left column, and select the "Erase" tab. Select "Mac OS Extended (Journaled)" from the Format drop-down menu. Click on "Erase", and then click "Erase" again to confirm. The drive will be formatted, and renamed "Untitled."

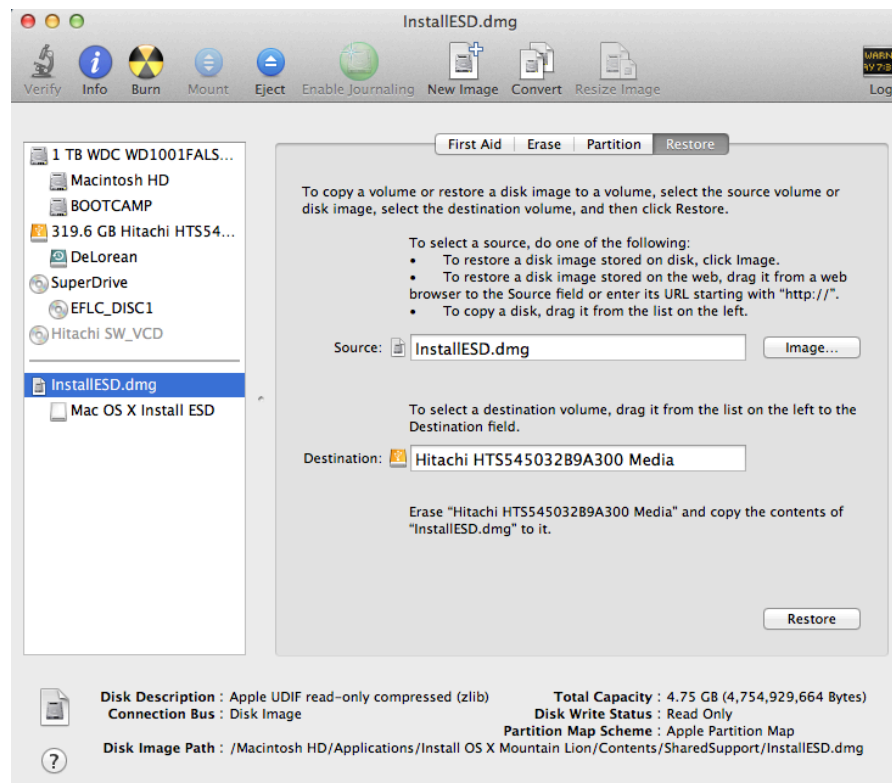


OS X Mountain Lion

8. Select "InstallESD.dmg" in the left column, and click on the "Restore" tab. "InstallESD.dmg" should be listed in the "Source" column. Drag the entry in the left column that lists the storage capacity and brand name of your USB flash drive into the "Destination" column. See the example photo below for further help.

Example: Your USB flash drive is a 320GB Hitachi flash drive. When you plug the flash drive into your Mac, Disk Utility will list it as a 319.6 GB Hitachi drive, then the model number. Drag the "319.6 GB Hitachi" listing to the "Destination" column.

9. "InstallESD.dmg" should now be in the "Source" column, and your USB flash drive in the "Destination" field. Below the "Destination" field, it should say that Disk Utility will erase your USB flash drive, and copy the contents of "InstallESD.dmg" to it. Click on the "Restore" button, and click on "Erase" to confirm the operation. You may be asked to enter an Administrator password.



Migrating to Mountain Lion

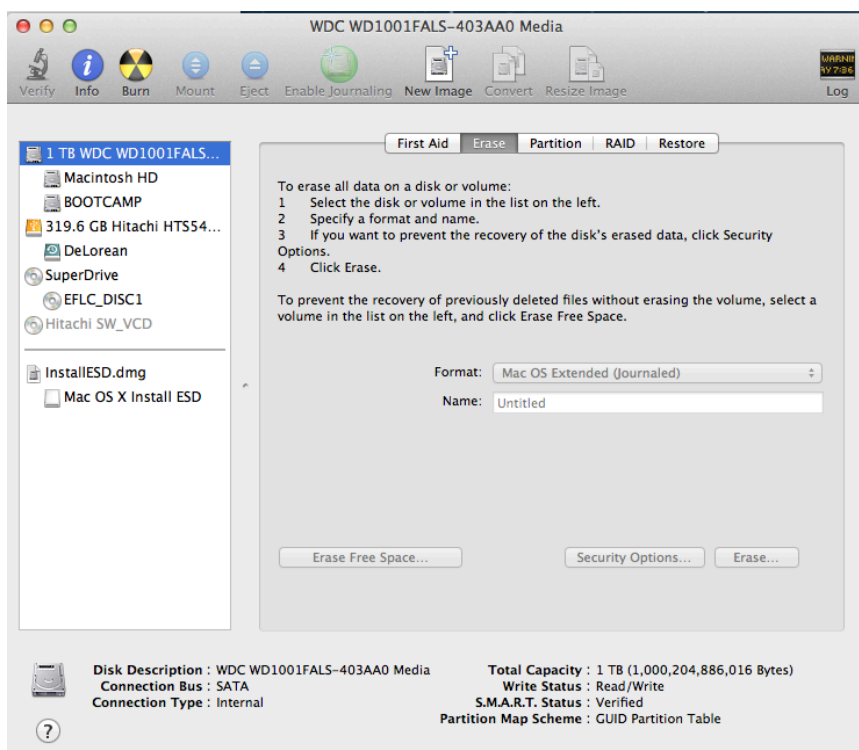
10. Do not disconnect the USB flash drive from your Mac. Shut down your Mac.
11. Immediately after pressing the power button, hold down the ALT-Option key on your keyboard. Using the arrow keys, scroll over to your USB flash drive. It should say "InstallESD" or "OS X Mountain Lion Installer." Press enter to boot from the USB flash drive into the OS X Mountain Lion install environment.



Migrating to Mountain Lion

12. Once booted, double-click Disk Utility in the menu of actions. Select the entry in the left column (usually the very first entry) that lists the capacity, brand, and model number of your Mac's internal hard drive. For further explanation, see the photo below.

Example: Your Mac has a 1 terabyte Western Digital hard drive. Disk Utility would list it as a "1TB WDC" drive, with the model number following. Select the "1TB WDC" entry, and click the erase tab. You are now at the proper tab to erase your drive.



13. Make sure "Mac OS Extended (Journaled)" is in the "Format" column. In the "Name" column, type in "Macintosh HD" (without quotation marks).

14. Click on "Erase", then click on "Erase" again to confirm the action, and to erase your drive.

15. Close Disk Utility, and select "Install OS X Mountain Lion" in the menu of actions. Follow the steps to install OS X Mountain Lion.

16. Once installation is complete, your Mac will reboot using its internal hard drive. The OS X Setup Assistant will open.

17. When you reach the screen asking you if you'd like to transfer data, make sure your backup drive is connected, and select the option to transfer data from a Time Machine backup.

18. Select the items you'd like to transfer, and click on the "Transfer" button. **Be sure to deselect all checkboxes under the "Settings" drop-down menu.**

19. After the Setup Assistant has finished transferring your data, click "Continue." The OS X Setup Assistant may ask you to complete additional steps, such as registering your Mac, and setting up iCloud.
20. Once finished, you will be brought to the login screen. Login using your existing credentials.
21. You have now successfully done a clean install of OS X Mountain Lion from OS X Lion, or Mac OS X Snow Leopard.