

Subject: SSD7101A—macOS Boot Camp Test Report

Revision history:

Version	Description	Date
V1.00	Init version	2020/9/2
V1.01	Use HighPointNVMe.internal to change HPT Drive to Internal Storage Device	2020/9/3

1. Test Environment

Motherboard	Mac Pro 2019
OS	macOS 10.15.6(19G2021)
CPU	3.5 GHz 8-Core Intel Xeon W
Memory	32G
HBA	SSD7101A OWC ACCELSIOR 4M2
SSD	Samsung 970 Pro
Driver	HighPointNVMe.internal
WebGUI	/

2. Test Procedure:

- 1) Connect the SSD7101A-1 + one SSD to motherboard;
- 2) Install Windows 10 system on NVMe Drive using CD-ROM;
- 3) After the system is installed, connect SSD7101A to MacPro 2019;
- 4) Enter macOS system, open Boot Camp.

Comparative verification 1: Use OWC ACCELSIOR 4M2 for verification

Comparison verification 2: Use HighPointNVMe.internal to change HPT Drive to Internal Storage Device

Test steps:

- a. Connect the SSD7101A-1 + one SSD to motherboard;
- b. Install HighPointNVMe.internal driver;
- c. After reboot, open Disk Utility to format the partition;
- d. Open Boot Camp and try to install Windows;

Comparative verification 3: Install macOS on a single disk of SSD7101A, and try to install Windows using Boot Camp in macOS on a single disk

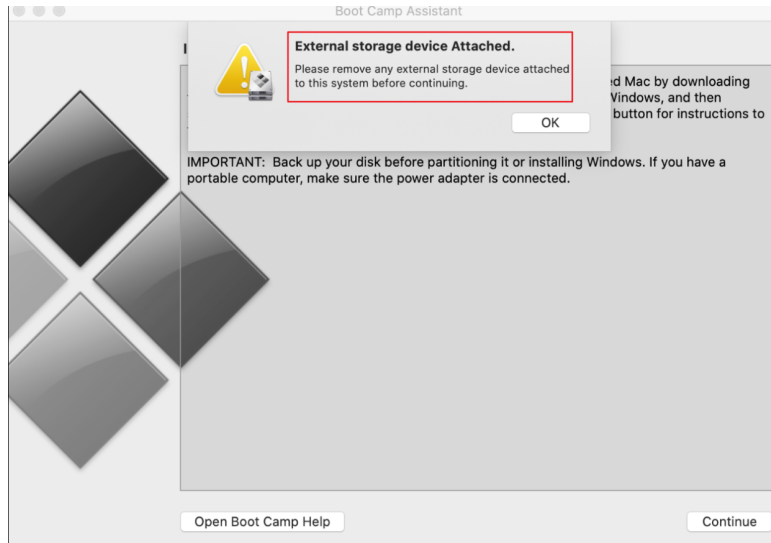
Test steps:

- a. Connect the SSD7101A-1 + one SSD to motherboard;
- b. Uninstall HPT Drive, use the Clone tool to install macOS on the SSD7101A single disk;
- c. Start with macOS on SSD7101A single disk;
- d. Install HighPointNVMe.internal driver;
- e. After the installation is complete and restart, open Boot Camp and try to install Windows;

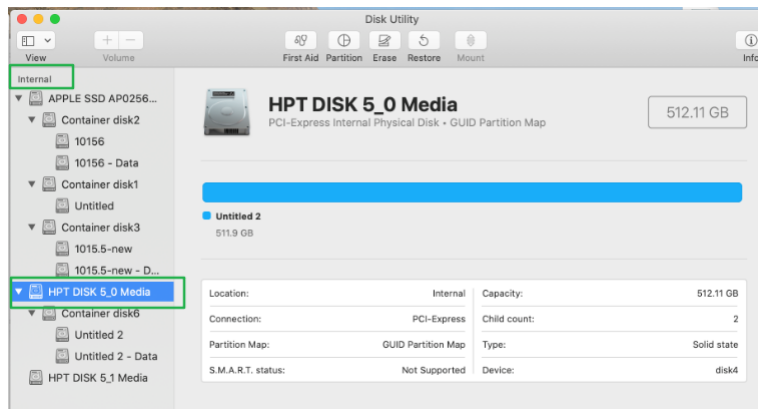
3. Test result

- 1) The Windows system directly installed with External Drive cannot be used on Mac Pro 2019;
- 2) Both SSD7101A and OWC ACCELSIOR 4M2 do not support Boot Camp to install

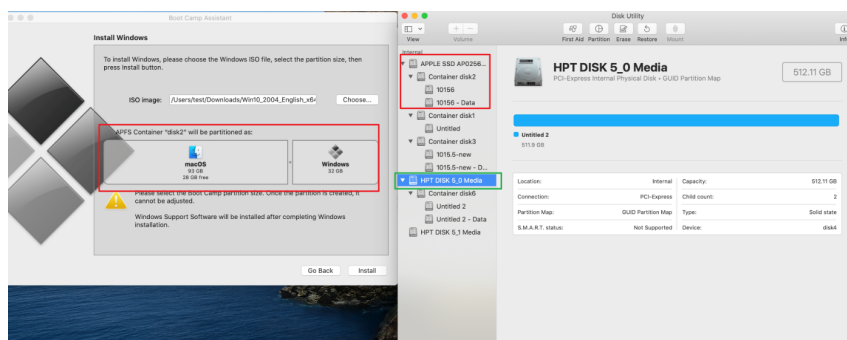
Windows;



- 3) Use HighPointNVMe.internal driver to change HPT Drive to External Storage Device



- 4) After HPT Drive is changed to External Storage Device, Boot Camp still automatically selects the Macintosh HD partition to create the Windows partition, and it cannot be changed manually



4. Test conclusion
- 1) Both SSD7101A and OWC OWC ACCELSIOR 4M2 do not support Boot Camp to install Windows;
 - 2) Need to use Boot Camp to install the Windows system on the Mac. Currently cannot install the Windows system directly to the disk;
 - 3) Boot Camp requires Internal Drive to install Windows system;
 - 4) Mac Pro 2019 can only use the built-in Macintosh HD for Windows (Boot Camp) partition