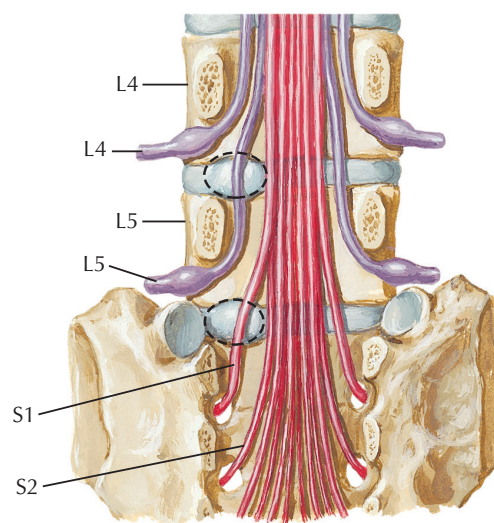
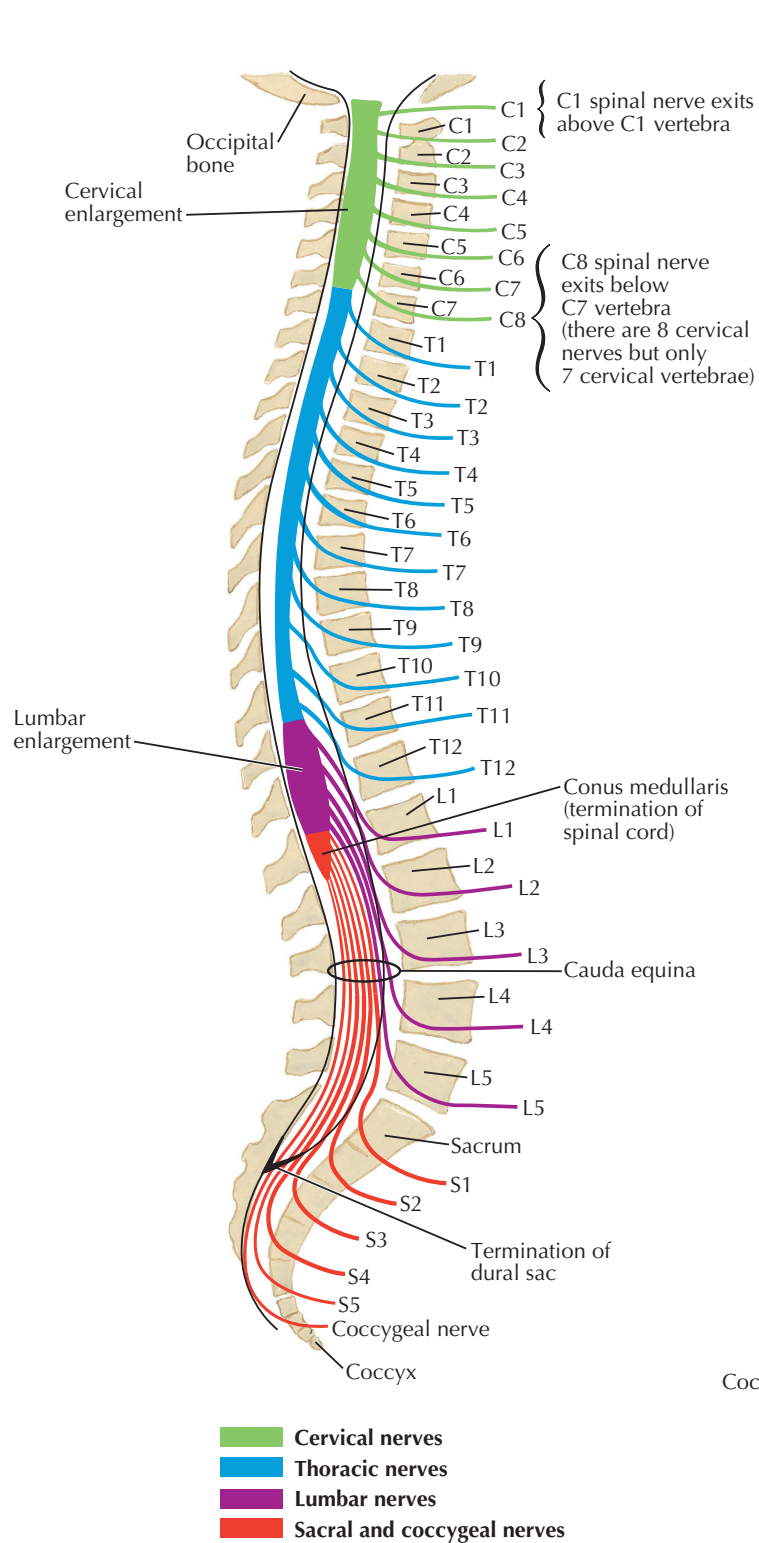
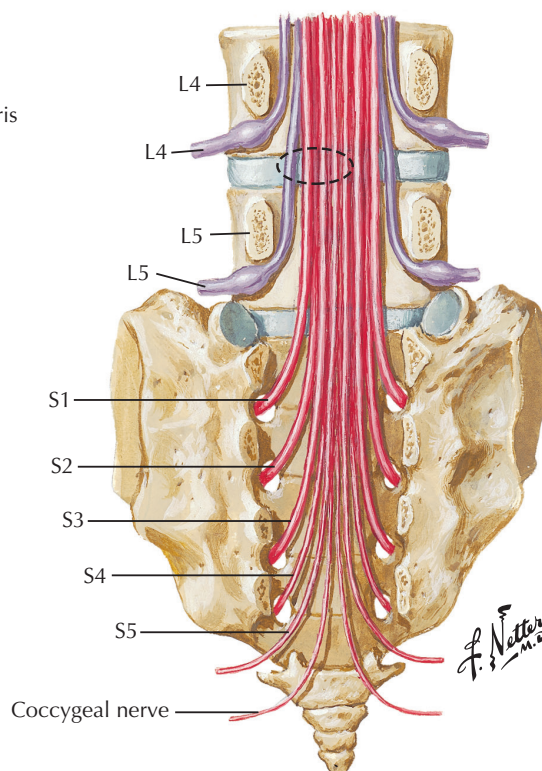


Relation of Spinal Nerve Roots to Vertebrae



Lumbar disc protrusion (*dashed ovals*) does not usually affect nerve exiting above disc. Lateral protrusion at disc level L4-5 affects L5 spinal nerve, not L4 spinal nerve. Protrusion at disc level L5-S1 affects S1 spinal nerve, not L5 spinal nerve.



Medial protrusion at disc level L4-5 (*dashed oval*) rarely affects L4 spinal nerve but may affect L5 spinal nerve and sometimes S1-4 spinal nerves.